

## Location / Driving Directions:

### Driving Directions:

From the Hilo Airport - Turn right at the first traffic light after leaving the airport (Highway 11).

Turn left at the next traffic light (Kameha-meha Ave.). Continue through downtown to the last traffic light (Waianuenue) and turn left. Go one block and turn right (Keawe St.). Go over the bridge and turn left (Ohai St.).

Continue one block to stop sign. (From this point it is four miles to the Inn, all of which is paved. After the stop sign, continue one mile to Maikalani and turn left. Continue one mile to Kulaniapia sign. (At this point the road goes up through the middle of 2000 acres of Macadamia Nut trees.)

Follow the signage to the Inn. There are not street lights from the stop sign to the Inn (4 miles), so if at all possible, it would be best to arrive during daylight hours on your first visit.

From Kona via the Hamakua Coast (Highway 19) From Kona, get onto Highway 190 toward Waimea. Make a right turn at Highway 19 and continue to through Waimea and down the Hamakua Coast.

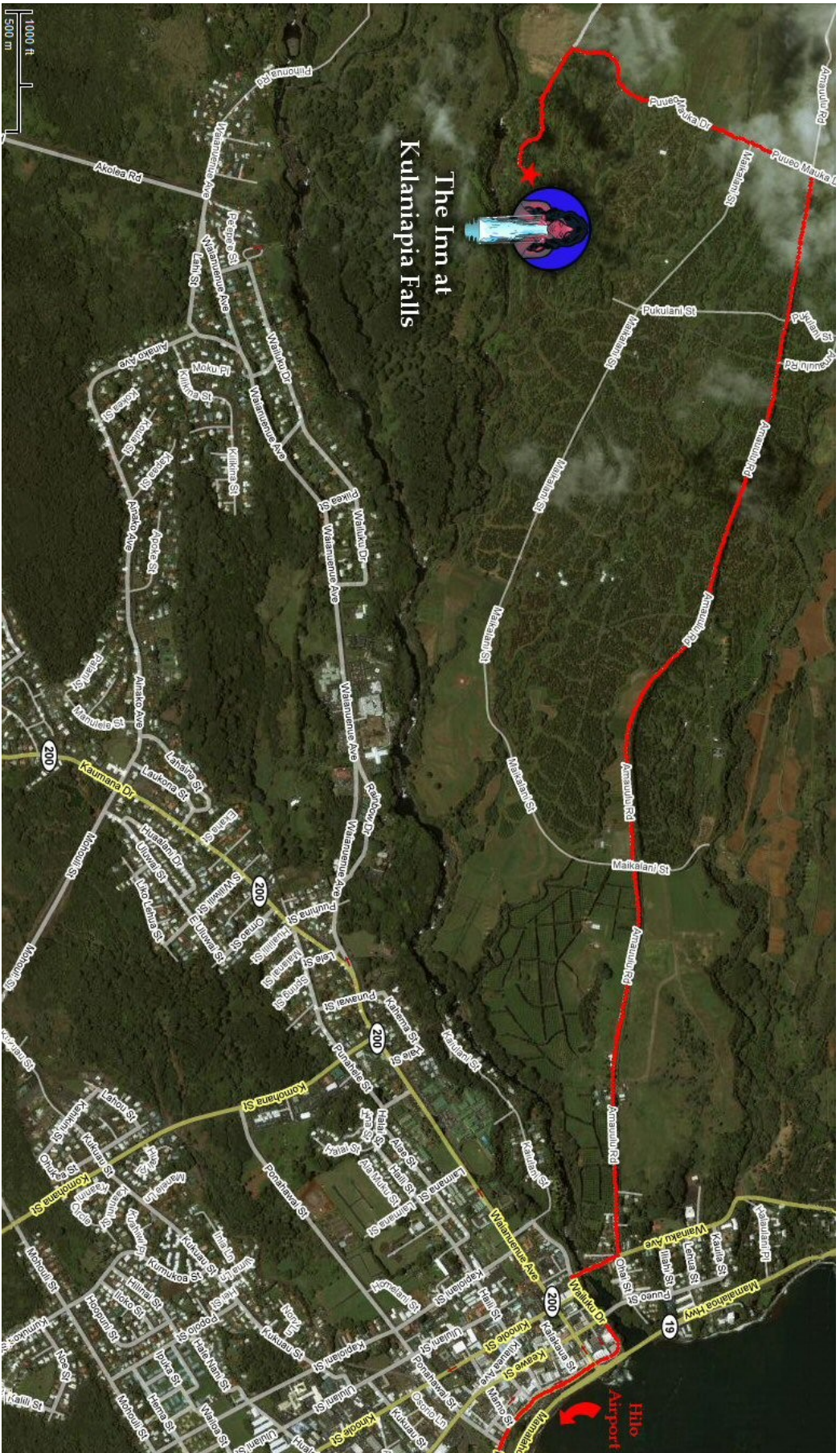
As you approach town you'll see an exit sign that says Hilo. As you exit you'll see a traffic light immediately.

Go straight ahead for one block to the next traffic light and make a right (Keawe St.). follow the directions as above to the Inn.

From Kona via Saddle Road From Kona, get onto Highway 190. Make a right turn at Highway 130 and continue between Mauna Loa and Mauna Kea all the way to Hilo.

Make a left turn at the first traffic light you come to (Komohana St.). Continue the end and make a right (Waianuenue Ave.)  
Make a left turn at the 5th traffic light (Keawe St.) and follow the directions as above to the Inn.

The Inn at Kulaniapia Falls - Luxury Bed & Breakfast Resort  
100 Kulaniapia Drive - Hilo Hawaii 96720 - P.O. Box 646, Hilo Hawaii, 96721  
Call Toll Free: 1-866-935-6789 - or Email: [waterfall@hilo.net](mailto:waterfall@hilo.net)



# The Inn at Kulaniapia Falls